

KX-NS series/KX-NSX series UM IMAP Session Controller

General Description

KX-NS series/KX-NSX series UM IMAP Session Controller is a small software plug-in for Microsoft Outlook®. The software when installed appears in the system tray and enables multiple and co-existent IMAP4 sessions between the Unified Messaging system (UM) of the Panasonic KX-NS series/KX-NSX series platform and a Microsoft Outlook® client and its other IMAP sessions.

The software plug-in prevents extended “persistent” IMAP4 sessions between a user’s Microsoft Outlook® client and the UM system of KX-NS series/KX-NSX series platform so that many users can share the IMAP4 sessions that integrate voice mail and email to deliver Unified Messaging to users.

This software is installed on the client PC and runs concurrently with Microsoft Outlook®. The plug-in changes the focus in the GUI from the UM IMAP account of NS series to the Microsoft Outlook® default e-mail Inbox folder after a defined time period. Microsoft Outlook® then disconnects the IMAP4 session from UM enabling additional IMAP sessions to run.

KX-NS series/KX-NSX series UM IMAP Session Controller increases the effective available number of co-existent KX-NS series/KX-NSX series UM IMAP4 sessions from 24 to approximately 300 (Medium Traffic).

Requirements

- This software may only be used in conjunction with a KX-NS series/KX-NSX series Unified Communication system.
- A properly configured e-mail account for KX-NS series/KX-NSX series UM is required.
- Supported operating system:
 - Windows Vista (32/64-bit)
 - Windows 7 (32/64-bit)
 - Windows 8 (32/64-bit)
 - Windows 8.1 (32/64-bit)
 - Windows 10 (32/64-bit)
- Supported Microsoft Outlook:
 - Outlook 2007 SP3 (32-bit)
 - Outlook 2010 (32/64-bit)
 - Outlook 2013 (32-bit/64-bit)
 - Outlook 2016 (32-bit/64-bit)
- Microsoft .NET Framework v3.5 SP1 is required.

Notes

- A thin client environment (e.g. Windows Terminal Services) is not supported.
- Click-to-Run is not supported.
- When e-mail account settings are changed Microsoft Outlook® must be restarted.

IMPORTANT

The software stores the UM e-mail account name. In order to prevent data theft, we recommend the following:

- Set a password-protected screensaver to activate after your computer has been idle for a set amount of time.
- Use Windows® Update to keep your system up-to-date with the latest software patches.

- Set a login password that is at least 8 characters long and contains a combination of letters and numbers.
- Periodically change all login passwords to prevent unauthorised access by third parties.
- When the computer used for the software is transferred, disposed of, or taken out of service, ensure all sensitive data is securely erased.

Trademark

- Microsoft[®], Windows[®], Windows Vista[®] and Outlook[®] are either registered trademarks or trademarks of Microsoft Corporation in the United States and/or other countries.
- All other trademarks identified herein are the property of their respective owners.
- Microsoft product screen shot(s) reprinted with permission from Microsoft Corporation.

Installation

Run UmicSetup.exe. Then follow the on screen instructions of the installer.

Uninstall

Control Panel -> Add Remove Program is used to uninstall this software.

System Tray Menu

While this software is running-, you can configure option settings. To open the dialog, right click on the icon in system tray, and then select an item.

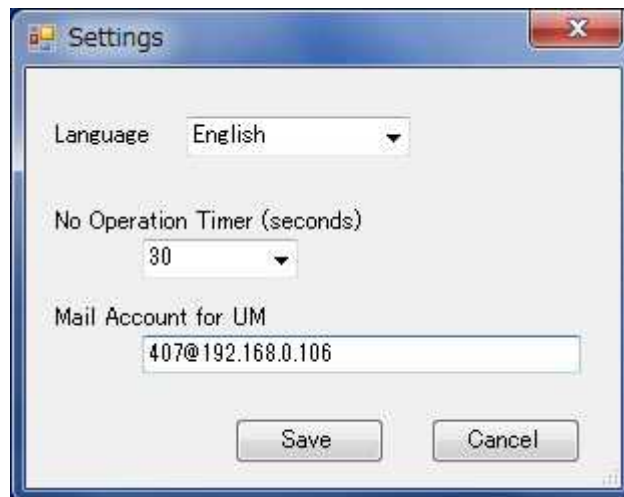


System Tray Icon

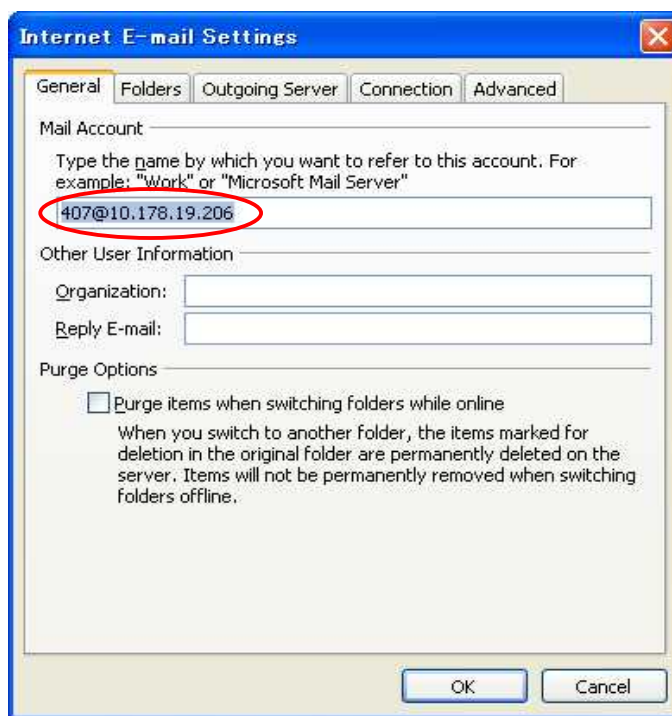


Right Click Menu

Settings



Parameter	Description
Language	Languages supported on this settings dialog and system tray menu; English, Spanish, French, Portuguese, German, Italian, Russian, Dutch
No Operation Timer	Time period for Microsoft Outlook® focus moving. Minimum timer value is 30 seconds. Maximum timer value is 600 seconds. Recommended timer value=30 secs to 60 secs
Mail Account for UM	Enter e-mail account for UM. If nothing is entered, all of the e-mail accounts using IMAP are assumed as account for UM. You can copy the mail account from following “Internet E-mail Settings” dialog. Maximum size is 256 characters.



To open this dialog, follow Outlook – “Tools” menu – “Account Settings” – “Change” – “More Settings” button.

About

Copyright and software version is shown

Exit

To exit this software, select this menu.