

Solution for Error of tree survey

(KX-UDS/UDT series)

No. 41-006

July 3 , 2017

Ver.1.0

Panasonic Corporation

Abstract about this document

This document describes about trouble shooting of tree survey.

Revision history

Date	Version	Revision	Firmware version
Aug 21, 2012	Ver. 1.0	Initial Release	All versions
July 3, 2017	Ver. 1.0	Add page 3 Add page 6 Add page 17 Modify page 16	All versions

The difference between Web user interface and CS Maintenance Tool

Function		Web user interface	CS Maintenance Tool
Multi language support		When Login by ADMIN authority : US English only When login by USER authority*1 : 8 languages *1: for limited screens	When Login by ADMIN authority : US English (Default) + additional languages available (XML) *Additional language xml files may be found at the Panasonic's website.
CS registration		Yes	No
Tree survey	Maximum number of CS	9	32
	Layer of tree	8 layers	8 layers
	Result display	Available	Available
	Tree image display *Color display only immediately after Tree survey	By text No information of neighboring CS	By illustration Neighboring CS information by color
	Reflect results to each CS	Yes	Yes
	Manual tree structuring	Yes	Yes
CS status display while in actual operation	Result list	Yes	Yes
	Tree image display	By text Monitor status (RSSI/Error rate/ LAN connection) in color	By illustration Monitor status (RSSI/Error rate/LAN connection) in color
Logging function	Error detection log	Yes	Yes
	Communication interrupt log	No	Yes

Notices

- **We strongly recommend conducting the Site Survey** before conducting Tree Survey.
- You can use **CS monitor** function for checking LAN connection.
➡ See page 5
- You must **click "Cancel" button** to restart Tree Survey when you fail Tree Survey. (SIP-CSs reboot automatically)
➡ See page 17

The condition to be able to start tree survey

You can check the LAN connection and air sync with using CS monitor function.

It does not matter that RSSI and Error Rate are not shown to start tree survey.

When all status shows OK, you can start tree survey.

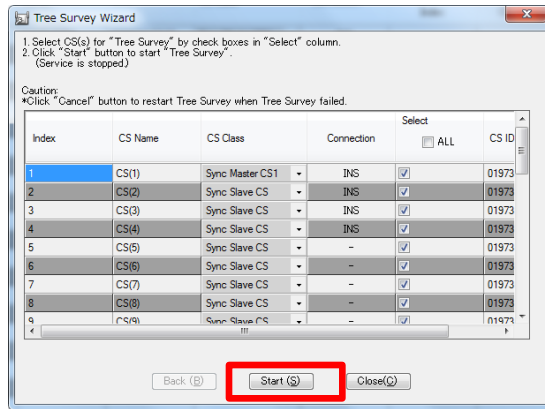
Index	RSSI [dBm]	Error Rate [%]	Wired LAN	CS Name	MAC Address	Status	Current Sync CS Type	CS RPT	CS Index
1	-	-	OK	00.80.F0.E9.74.1D	00.80.F0.E9.74.1D	INS	-	-	-
2	-	-	OK	00.80.F0.E9.73.7E	00.80.F0.E9.73.7E	INS	-	-	-
3	-62	0	OK	00.80.F0.E9.74.21	00.80.F0.E9.74.21	INS	Primary CS	CS	1
4	-	-	OK	00.80.F0.E9.73.66	00.80.F0.E9.73.66	INS	-	-	-
5	-	-	OK	00.80.F0.E9.73.8E	00.80.F0.E9.73.8E	INS	-	-	-
6	-	-	OK	00.80.F0.E9.73.67	00.80.F0.E9.73.67	INS	-	-	-
7	-57	0	OK	00.80.F0.E9.73.6A	00.80.F0.E9.73.6A	INS	Primary CS	CS	1
8	-	-	OK	00.80.F0.E9.73.82	00.80.F0.E9.73.82	INS	-	-	-
9	-45	0	OK	00.80.F0.E9.73.90	00.80.F0.E9.73.90	INS	Primary CS	CS	1
10	-	-	OK	00.80.F0.E9.73.7D	00.80.F0.E9.73.7D	INS	-	-	-
11	-	-	OK	00.80.F0.E9.73.7F	00.80.F0.E9.73.7F	INS	-	-	-
12	-	-	OK	00.80.F0.E9.73.7C	00.80.F0.E9.73.7C	INS	-	-	-
13	-	-	OK	00.80.F0.E9.74.D4	00.80.F0.E9.74.D4	INS	-	-	-
14	-	-	OK	00.80.F0.EF.D8.0C	00.80.F0.EF.D8.0C	INS	-	-	-
15	-	-	OK	00.80.F0.E9.76.19	00.80.F0.E9.76.19	INS	-	-	-
16	-	-	OK	00.80.F0.E9.73.7A	00.80.F0.E9.73.7A	INS	-	-	-

At this stage (Before completing Tree Survey), only status of “Wired LAN” makes sense.

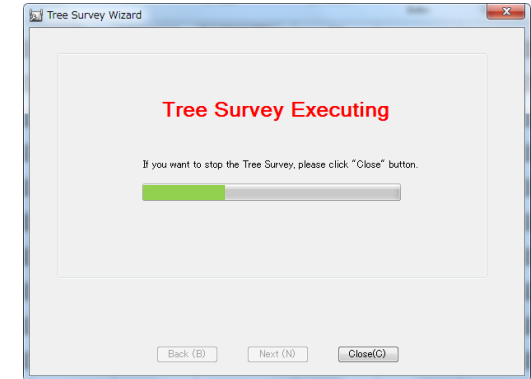
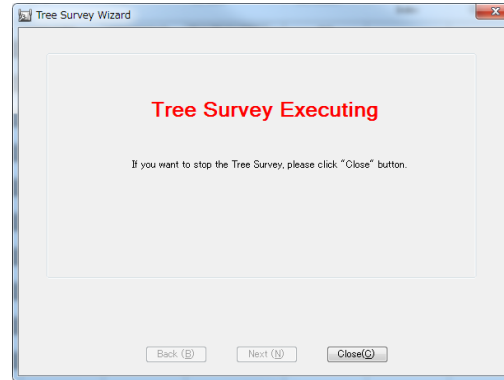
Don't care status of RSSI/Error rate before completing Tree Survey, because Primary CS is not decided completely at this stage.

It might to wait several minutes before executing tree survey

There is a case, it takes several minutes before executing tree survey after pushing [Start] button.



[Start]



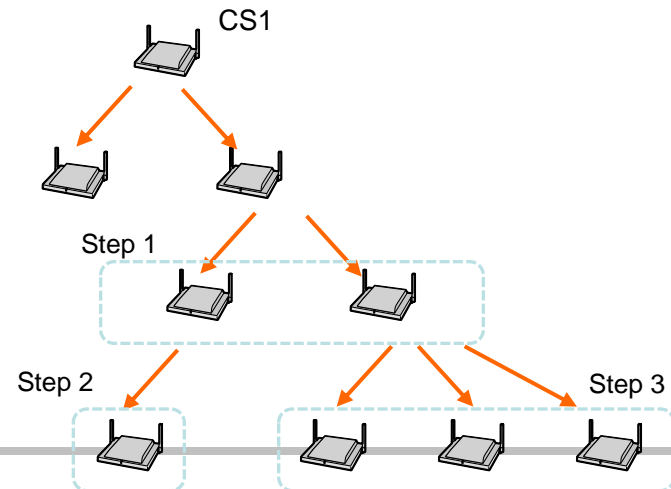
Show this dialogue several minutes.

It depends on the depth of the tree, because Air sync procedure is done step by step.

It might take from 1 to 3 minutes to synchronize one tree.

And this time depends on the strength between CSs to be synchronize.

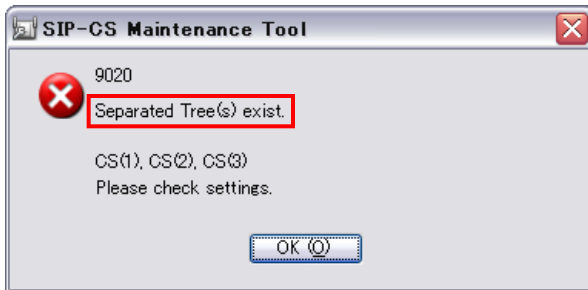
On the example of right figure, Air sync should be taken 3 times. So, the sum of Air sync time is about 9 minutes as maximum.



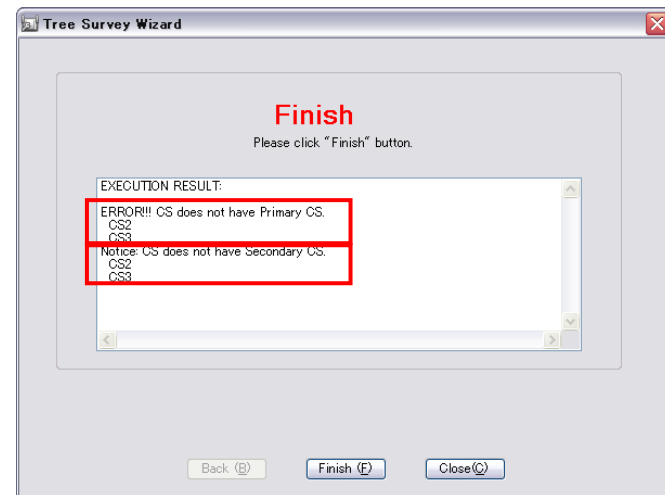
CS Maintenance Tool

If there are some errors,
Error Messages will be displayed as shown below.

example



or



Consult the Error Message Table in next few pages,
and try what is described in solution column .

You must resolve all errors for completing a tree survey.

Note:

At CS Maintenance Tool,
Master CS is called "Sync Master CS1",
2nd Master CS is called "Sync Master CS2"

Tree Survey -By CS Maintenance Tool- Error Message Table

Screen	Phase	Error/ Notice	Code	Message	Explanation	Solution
Login		Error	9004	Connection error Please confirm the network connecting the CS(s) and PC	The causes are followings. - CS is powered off. - Network trouble between PC and CS - IP address is invalid	Please confirm the network connecting Super Master and PC. Check IP address of Super Master.
		Error	9005	Login error Check User name and Password.	Login failed.	Check User name and Password.
Air Sync	Start	Error	9007	Sync Master CS1 is not selected. Check whether Sync Master CS1 is selected.	Sync Master CS1 is not selected when starting Tree Survey.	Confirm a check box whether Sync Master CS1 is selected.
	Executing	Error	9006	Connection error. Please confirm the network connecting the CS(s) and PC	The causes are followings. - CS is powered off. - Network trouble between PC and CS - IP address is invalid	Please confirm the network connecting Super Master and PC. Check IP address of Super Master.
		Error	9009	Monitoring error because air synchronization has not been established. Please move the CS(s) closer to Primary CS according to site planning.	The CS can not synchronize with other CS by following cause. - CS could not find an adjacency CS.	Move the CS(s) closer to adjacency CS.

Tree Survey -By CS Maintenance Tool- Error Message Table

Screen	Phase	Error/ Notice	Code	Message	Explanation	Solution
Air Sync	CS Monitoring	Error	9009	Monitoring error because air synchronization has not been established.	The CS can not synchronize with other CS by following cause.	Move away each CS with proper distance.
				Please move the CS(s) closer to Primary CS according to site planning.	- There are too many CSs around the CS. - Interference occurs around the CS.	Remove interference around the CS(s).
	Tree Survey Result	Error	-	Notice: CS does have Secondary CS.	One or more SIP-CSs could not have a Slave CS assigned for reasons such as avoiding the creation of a loop. However, this is not a problem.	This is not a problem. See page 16 for detail.
				Please move the CS(s) closer to Secondary CS according to site planning in this case.		
Tree Survey Result	Error	-	ERROR!!! CS does not have Primary CS.	A SIP-CS has radio signal trouble.	Please check whether a radio signal obstacle, such as a metal shelf, a door etc., exist near the SIP-CS. And conduct Tree Survey again, after clicking [Cancel].	
			Please move the CS(s) closer to Primary CS(s) according to site planning.			
	Error	-	Error!!! Parameter Error.	A SIP-CS has radio signal trouble. - Error rate is high - Invalid data is received.	Interference may occur. Please check wireless environment.	

Tree Survey -By CS Maintenance Tool- Error Message Table

Screen	Phase	Error/ Notice	Code	Message	Explanation	Solution
Air Sync	Tree Survey Result	Error	-	ERROR!!! Unknown error code.	Tree Survey failed for some reason.	Conduct the Tree Survey again
		Error	-	Result contains more than 9 levels.	Level is over 9. So user can not apply.	Please refer to Tree Structure and relocate CS(s) for reducing the level.
		Error	9020	Separated Tree(s) exist.	Some isolated trees has been created by Tree Survey.	Accidental situation might have occurred, like a door was closed near some CSs. Please check location and environment of CSs.
	Apply	Notice	9033	Sync Master CS2 does not exist.	Sync Master CS2 is not set.	Set Sync Master CS2 manually if needed.
		Notice / Error	9022	CS does not have Secondary CS. Please check settings.	1) Secondary CS is not set. (Notice) 2) CS number set as Secondary CS does not exist in the group. (Error)	1) This is not a problem. See page 16 for detail. 2) Set correct CS number of Secondary CS.
		Notice	-	CS does not have Primary CS. Please check settings.	1) Primary CS is not set in GUI. 2) CS number set as Primary does not exist in the group.	1) Set Primary CS. 2) Set correct CS number of Primary CS.

Tree Survey -By CS Maintenance Tool- Error Message Table

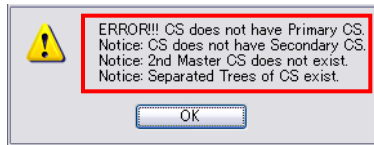
Screen	Phase	Error/ Notice	Code	Message	Explanation	Solution
Air Sync	Apply	Error	9120	Primary index is same as Secondary index. Please check settings.	Primary CS is equal to Secondary CS.	Please check Settings.
		Error	9121	Primary or Secondary index is same as own index. Please check settings.	Primary CS or Secondary CS is equal to own CS.	Please check Settings.
		Notice	9300	System is Reset.	Warning to apply or cancel.	-
		Notice	9302	Sync Master CS2 already exists.	When user selected CSs before tree survey. Sync Master CS2 already exist in CS list except Tree Survey result.	Sync Master CS2 must be one or less. Please change the CS class manually.
		Notice	-	!!! Error !!! It is not allowed to automatically change "Sync Master CS1". Please swap current "Sync Master CS1" for new one by hand. Current : "CS Name" New : "CS Name"	Sync Master CS1 is manually changed when apply button is clicked. (Sync Master CS1 can't change by GUI.)	Please swap current "Sync Master CS1" for new one by hand if you want to change Sync Master CS1.

Tree Survey -By CS Maintenance Tool- Error Message Table

Screen	Phase	Error/ Notice	Code	Message	Explanation	Solution	
CS Status Monitor		Error	9020	Separated Tree(s) exist.	Some isolated trees has been created when receiving monitor date.	Accidental situation might have occurred, like a door was closed near some CSs.	
	Maintenance	Import language file	Error	9027	Failed (Invalid Path)	folder not found. (Invalid path)	Check file path.
			Error	9028	Failed (Invalid File name)	non-exist file	Check file name
			Error	9029	Failed (Invalid Language file format) Check language file format.	Invalid or corrupted language file.	Check language file format.
Error			9030	Failed (Import)	Failed to import language file due to cause other than the above.	Check language file.	
Common		Error	9101	Failed (CS error: "error code")	Error is returned from CS after sending request of interface between CS Maintenance Tool and CS	Check CS hardware status by LED.	

CS WEB UI

If there are some errors,
Error Messages will be displayed as shown below.



or

Status | Network | **System** | VoIP | Telephone | Maintenance

Tree Survey

Tree Survey Timeout

Tree Survey

Air Sync Group: 1

This "Tree Survey" is executed to all the CS in Survey List.

Tree Survey:

This "Result Application" is executed to all the CS in Survey List.

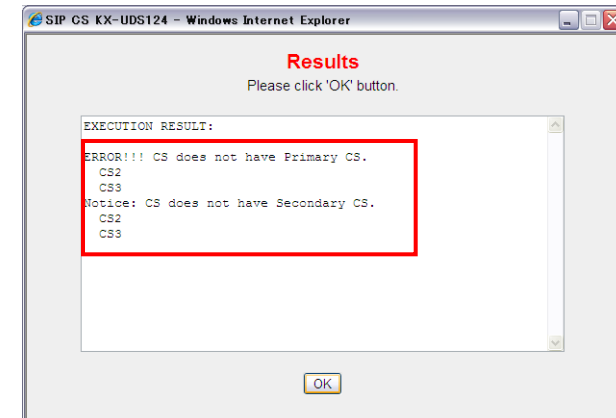
Result Application:

The CS reboots automatically if you press the button of "Apply" or "Cancel".

Survey List

Index	CS Name MAC Address	CS Class	Status	Primary CS Index	Secondary CS Index	Level
1	0080F0E97646	Master	INS	-	-	-
2	0080F0D755CC	Slave	INS	<input type="text"/>	<input type="text"/>	
3	0080F0E97376	Slave	INS	<input type="text"/>	<input type="text"/>	

or



Consult the Error Message Table in next few pages,
and try what is described in solution column .

You must resolve all errors for completing a tree survey.

Please use IE as web browser.
Other browsers may not display error messages.

Tree Survey -By WEB UI- Error Message Table



Phase	Error/ Notice	Message	Explanation	Solution
Start tree Survey	Error	CS Number Error	1) There are no SIP-CSs (or only one SIP-CS) in the Air Sync Group. 2) There are 10 or more SIP-CSs.	1) Before conducting the Tree Survey, please register SIP-CSs. 2) When there are 10 or more SIP-CSs, please use CS Maintenance Tool for Tree Survey.
	Error	Tree Survey Timeout.	1) Slave CS may have network trouble. 2) Slave CS cannot receive radio signal from another Air Sync Group CS.	1) Please check the SIP-CS's power/network condition. 2) Please check whether a radio signal obstacle, such as a metal shelf, a door, etc., exists near the SIP-CS.
	Error	ERROR!!! CS does not have Primary CS.	A SIP-CS has radio signal trouble.	Please check whether a radio signal obstacle, such as a metal shelf, a door, etc., exists near the SIP-CS.
	Error	ERROR!!! Parameter error	All monitoring data are not valid. - Error rate is high - Invalid data is received.	Interference may occur. Please check wireless environment.
	Error	ERROR!!! Unknown error code.	Tree Survey failed for some reason.	Conduct the Tree Survey again.
	Notice	Notice: CS does not have Secondary CS.	One or more SIP-CSs could not have a Slave CS assigned for reasons such as avoiding the creation of a loop. However, this is not a problem.	This is not a problem. See page 16 for detail.

Tree Survey -By WEB UI- Error Message Table

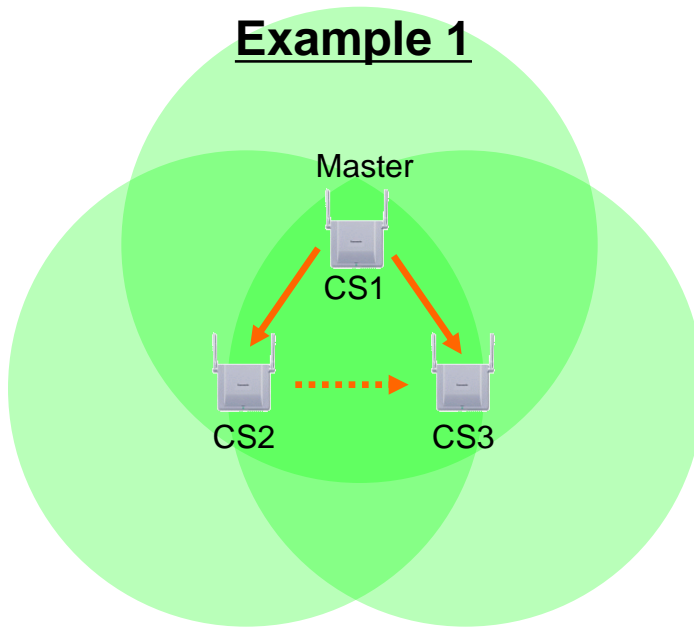
Phase	Error/ Notice	Message	Explanation	Solution
Apply / Tree Image	Error	ERROR!!! Master CS does not exist.	Master CS does not exist.	Before conducting the Tree Survey, please register SIP-CSs.
	Error	ERROR!!! Primary index == Secondary index.	Primary CS is equal to Secondary CS.	Please check settings.
	Error	ERROR!!! Primary / Secondary index == Own index.	Primary CS or Secondary CS is equal to own CS.	Please check settings.
	Error	ERROR!!! Two or more 2nd Master CS exists.	Two or more 2nd Master CS exists.	2nd Master must be one or less.
	Error	ERROR!!! CS does not have Primary CS.	1) Primary CS is not set in GUI. 2) CS number set as Primary CS does not exist in the group.	1) Set Primary CS manually. 2) Set correct CS number of Primary CS.
	Error	ERROR!!! CS does not have Secondary CS.	CS number set as Secondary CS does not exist in the group.	Set correct CS number of Secondary CS.
	Error	ERROR!!! CS Level Error.	CS level must be 8 or less.	Please set Primary index / Secondary index to meet the condition. Rearrange the Master CS to the center of entire coverage area.
	Notice	Notice: Separated Tree of CS exist.	Some isolated trees has been created by Tree Survey.	Accidental situation might have occurred, like a door was closed near some CSs. Please check location and environment of CSs.
	Notice	Notice: 2nd Master CS does not exist.	2nd Master CS is not set.	Set 2nd Master CS manually if needed.
Notice	Notice: CS does not have Secondary CS.	Secondary CS is not set.	This is not a problem. See page 16 for detail	

“Notice : CS does not have Secondary CS”

From the viewpoint of redundancy,
It is better that the CS has secondary CS.
However, in the case like the example 2,
It is acceptable that the CS does not have secondary CS.
So, “CS does not have Secondary CS.” is not a problem.

 Primary clock signal
 Secondary clock signal

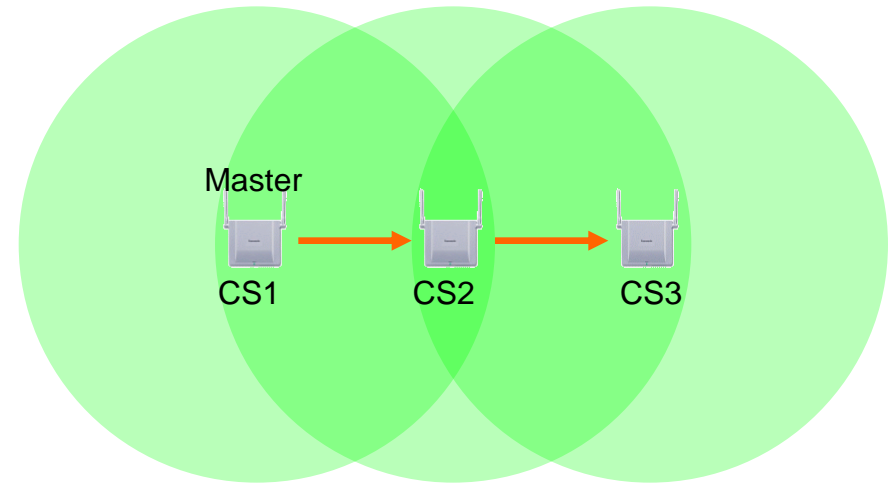
Example 1



index	CS class	Primary CS	Secondary CS
1	Master		
2	Slave	1	
3	Slave	1	2

In this case, CS3 can receive not only CS1’s clock signal but also CS2’s clock signal.
It means that Slave CS have the secondary CS.

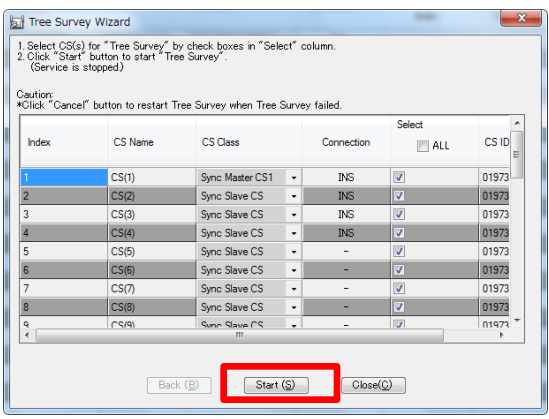
Example 2



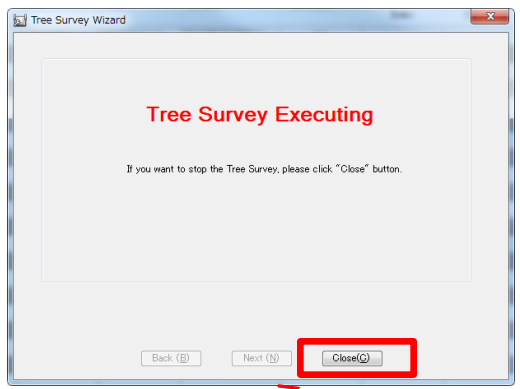
index	CS class	Primary CS	Secondary CS
1	Master		
2	Slave	1	
3	Slave	2	

In this case, CS3 can’t receive any clock signal except CS2’s clock signal.
It means that CS3 have the secondary CS.

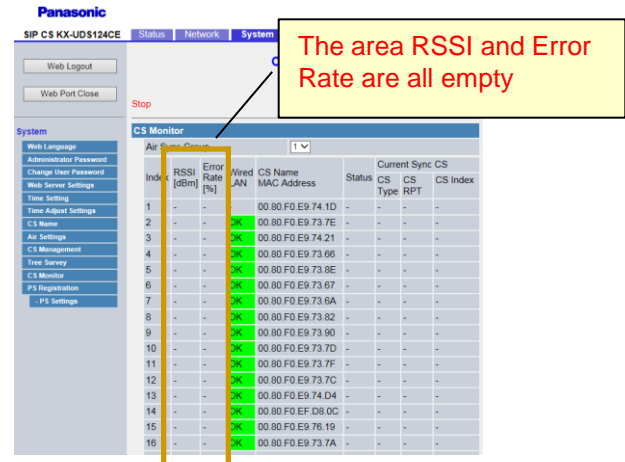
“Sample of tree survey fail case”



[Start]



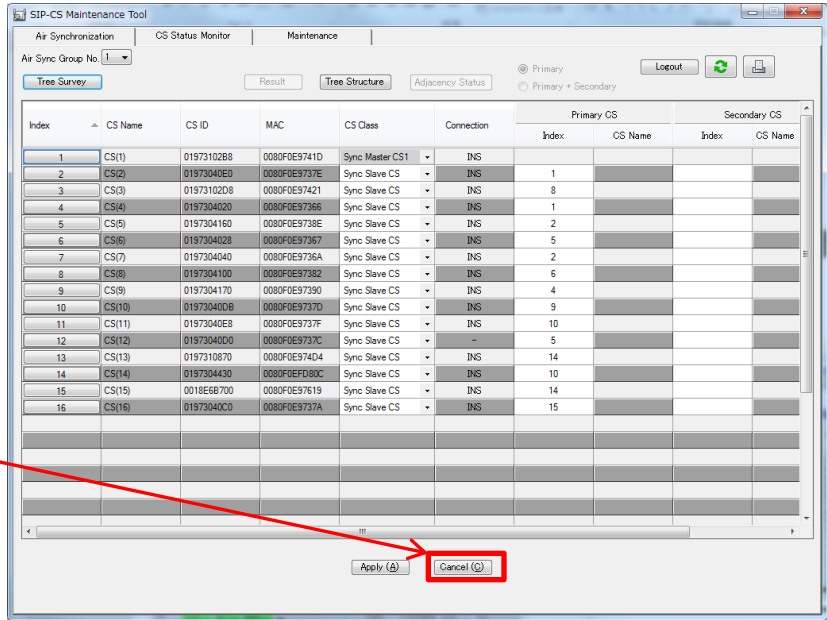
[Close]



When the CS monitor shows like this, it means halfway status

When you just push [Close] button of Executing window, tree survey status remains activated in all CS. You can identify such halfway status by seeing CS monitor as upper right figure.

In order to go back to normal status, you have to reboot all the CS by pushing [Cancel] button.



[Cancel]