

How to manage the configuration file downloading

(KX-UT1xx series/248)

No. 12-014

May 25 , 2012

Ver.1.1

Panasonic Corporation

Abstract about this document

This document describe about how to manage the configuration file downloading.

Revision history

Date	Version	Revision	Firmware version
Jun. 22, 2011	Ver. 1.0	Initial Release	All versions
May 25, 2012	Ver. 1.1	Add description about UT248	All versions

Manage for Download timing of Configuration Files

UT1xx/248 can automatically download the configuration files when it starts up according to its setting.

Also depending on the settings, we can control the download timing.

It can also download periodically, or download by synchronizing with SIP NOTIFY signal.

Please refer to the following sections for detail.

- 1-1. Parameters for determining the timing of downloading
- 1-2. Configuration for Automatic Download
- 2-1. Download by Synchronizing with SIP NOTIFY signal
- 2-2. Configuration for Synchronizing with SIP NOTIFY signal
- 3. Explanation of Setting Parameter

1-1. Parameters for determining the timing of downloading

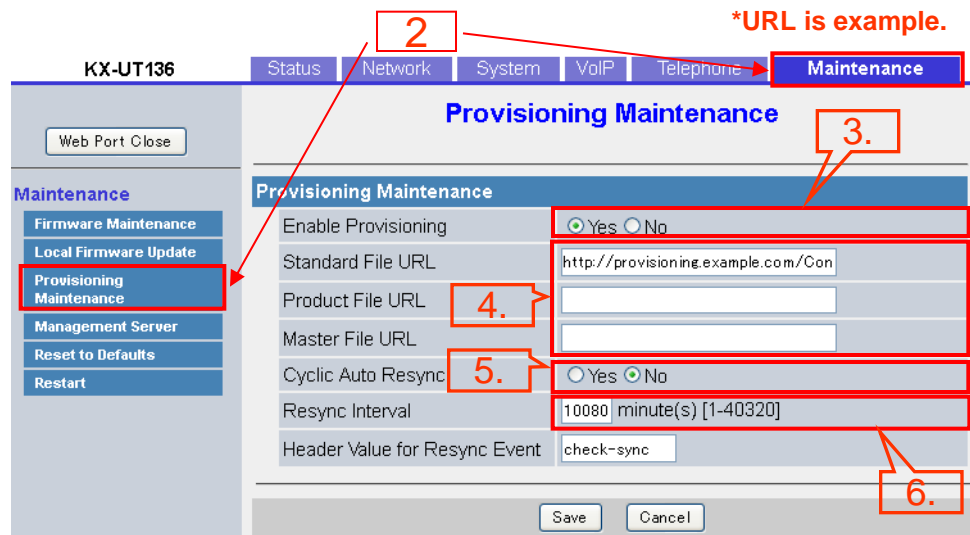
Configuration Parameter (web user interface parameter)	Prohibit Download	Download Once at startup	Periodical Download in specified interval	Periodical Download at specified time
PROVISION_ENABLE (Enable provisioning)	N	Y	Y	Y
CFG_CYCLIC (Cyclic auto resync)	-	N	Y	Y
CFG_CYCLIC_INTVL (Resync Interval)	-	-	Interval in minutes "10080" is default	-
CFG_RESYNC_TIME (-)	-	-	-	Resync Time e.g. "02:00"
CFG_RTRY_INTVL (-)	-	-	Retry Count "30" is default.	-
Download configuration file in each settings				

(-)/not effective

1-2. Configuration for Automatic Download

Setting method via WEB user interface

1. Enter the IP address into a PC's Web Browser. Login "Administrator".
2. Move to [Maintenance] - [Provisioning Maintenance] screen.
3. Check [Enable Provisioning] – "Yes".
4. Enter the path of Configuration file.
5. Check [Cyclic Auto Resync] – "Yes".
6. Enter the interval of download.



Setting method by Configuration file

1. Please set the configuration file as follows.

```
PROVISION_ENABLE="Y"  
CFG_STANDARD_FILE_PATH="http://provisioning.example.com/Config{mac}.cfg"  
CFG_CYCLIC="Y"  
CFG_CYCLIC_INTVL="10080"
```

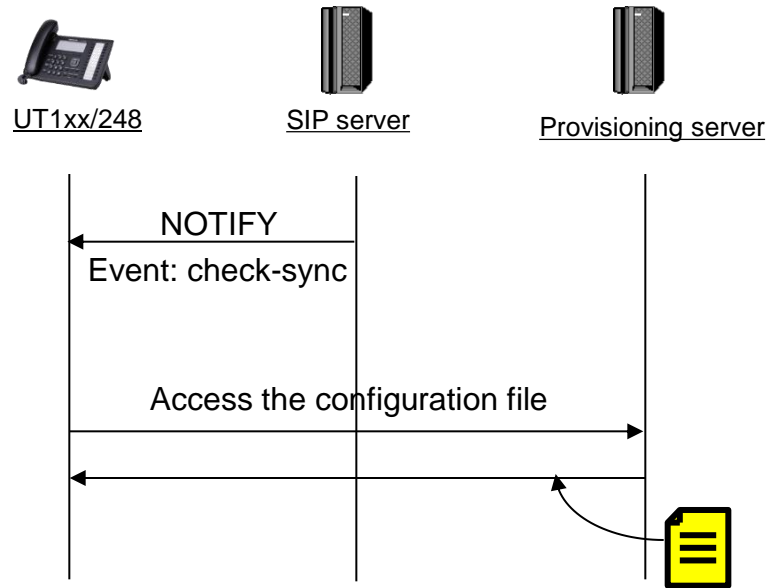
*URL is example.

*CFG_CYCLIC_INTVL="10080" is default value. Value range is "1 – 40320".

2. Apply to the terminal.

2-1. Download by Synchronizing with SIP NOTIFY signal

“Event” header value is example.



The following figure shows an example NOTIFY message from the server, directing the units to perform provisioning. The text "check-sync" is specified for "CFG_RESYNC_FROM_SIP".

```
NOTIFY sip:1234567890@sip.example.com SIP/2.0
Via: SIP/2.0/UDP xxx.xxx.xxx.xxx:5060;branch=abcdef-ghijkl
From: sip:prov@sip.example.com
To: sip:1234567890@sip.example.com
Date: Thu, 1 Jan 2009 01:01:01 GMT
Call-ID: 123456-1234567912345678
CSeq: 1 NOTIFY
Contact: sip:xxx.xxx.xxx.xxx:5060
Event: check-sync
Content-Length: 0
```

2-2. Configuration for Synchronizing with SIP NOTIFY signal

Setting method via WEB user interface

1. Enter the IP address into a PC's Web Browser. Login "Administrator".
2. Move to [Maintenance] - [Provisioning Maintenance] screen.
3. Specifies the value of the "Event" header (typically "check-sync" or "resync" is set) to "Header Value for Resync Event"

*URL is example.

Provisioning Maintenance	
Enable Provisioning	<input checked="" type="radio"/> Yes <input type="radio"/> No
Standard File URL	http://provisioning.example.com/Con
Product File URL	
Master File URL	
Cyclic Auto Resync	<input type="radio"/> Yes <input checked="" type="radio"/> No
Resync Interval	10080 minute(s) [1-40920]
Header Value for Resync Event	check-sync

Setting method by Configuration file

1. Please set the configuration file as follows.

```
CFG_RESYNC_FROM_SIP="check-sync"
```

2. Apply to the terminal.

3. Explanation of parameter(1/2)

Configuration File Parameter (WEB user interface Parameter)	Value Range (default)	Description
PROVISION_ENABLE (Enable provisioning)	Y/N (Y)	Specifies whether the unit is automatically configured by downloading the configuration files from the provisioning server of your phone system.
CFG_CYCLIC (Cyclic auto resync)	Y/N (N)	Specifies whether the unit periodically downloads configuration files from the provisioning server.
CFG_CYCLIC_INTVL (Resync Interval)	1-40320 (10080)	Specifies the interval, in minutes, between periodic downloads configuration files from the provisioning server.
CFG_RTRY_INTVL (-)	1-1440 (30)	Specifies the period of time, in minutes, that the unit will retry downloading configuration files after download/parse error occurs.

3. Explanation of parameter(2/2)

<p>CFG_RESYNC_TIME (-)</p>	<p>00:00–23:59 (Empty string)</p> <p>Note</p> <ul style="list-style-type: none">• If the value for this setting is any valid value other than an empty string, the unit downloads the configuration files at the fixed time, and the settings specified in "CFG_CYCLIC", "CFG_CYCLIC_INTVL", and "CFG_RTRY_INTVL" are disabled.• If the value for this setting is an empty string, downloading the configuration files at the fixed time are disabled.	<p>Specifies the time (hour:minute) that the unit checks for updates of configuration files.</p>
<p>CFG_RESYNC_FROM_SIP (Header Value for Resync Event)</p>	<p>Max. 15 characters</p> <p>Note</p> <ul style="list-style-type: none">• If the value for this setting is any value other than an empty string (typically "check-sync" or "resync" is set), the unit will access the configuration files on the provisioning server when the SIP server sends an event to notify the unit.• If the value for this setting is an empty string, the unit will not access the configuration files on the provisioning server even if the unit receives a synchronization notification of an event.	<p>Specifies the value of the "Event" header sent from the SIP server to the unit so that the unit can access the configuration files on the provisioning server.</p>

How to access Web user interface

1. Confirm the IP address of KX-UT1xx/248.

1-1 : [Setting] or [Setup] (Left soft key) → select [Information Display] → [Enter] → [Down] (joystick).

1-2 : Confirm the IP address displayed on LCD.

2. Embedded Web.

2-1 : [Setting] or [Setup] (Left soft key) → [#][5][3][4].

2-2 : Select [On] → [Enter].

3. Access the Web user interface.

3-1 : Open your Web browser.

3-2 : Enter your KX-UT1xx/248 URL to Web browser
(http://your KX-UT1xx/248 IP address) .

3-3 : Enter Authentication ID and password and click “OK”.
(Default :ID=“admin”, password=“adminpass”)