

Remote Access to Embedded WEB by NAT Port Forwarding

(KX-UT1xx series/248)

No. 12-016

May 25 , 2012

Ver.1.1

Panasonic Corporation

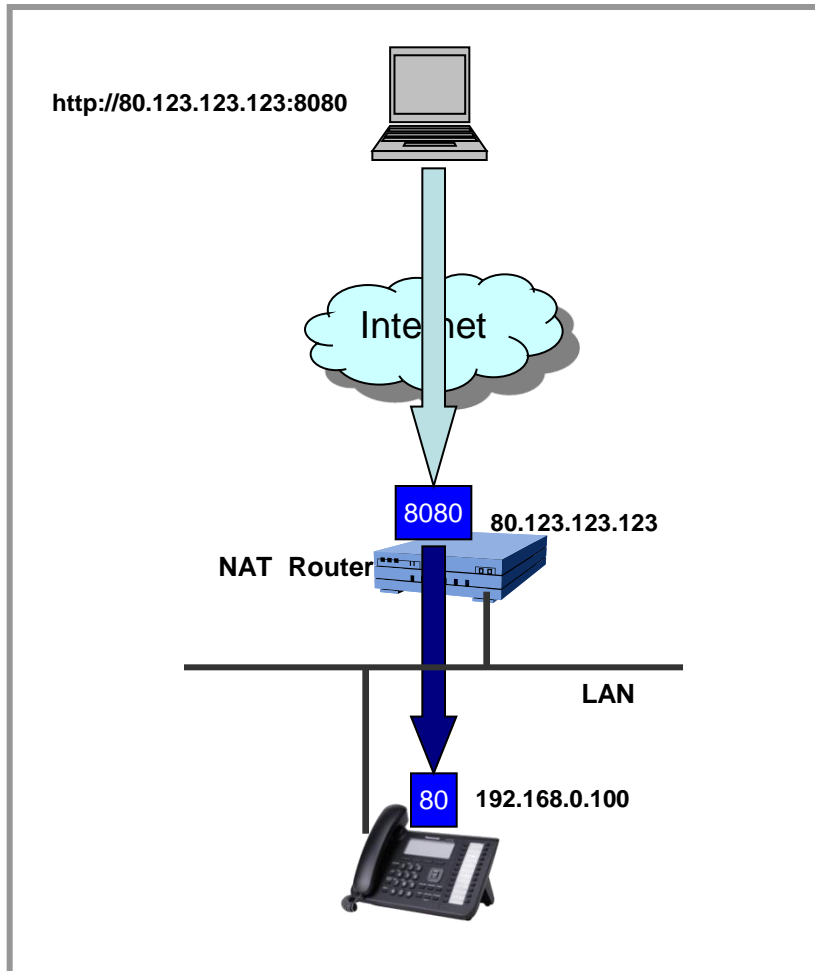
Abstract about this document

This document describe about how to access to the WEB interface of phone which is located behind the router with NAT.

Revision history

Date	Version	Revision	Firmware version
Jun. 22, 2011	Ver. 1.0	Initial Release	All versions
May 25, 2012	Ver. 1.1	Correct misdescription/Add UT248	All versions

Overview



Port forwarding are well-known technologies for enabling internet remote access to local devices behind NAT router or firewall.

And special setting is required for accessing to the device behind NAT router.

Please refer to the following section for the setting method for Port forwarding to access to device behind NAT router.

1. UT1xx/248 settings
2. NAT Router settings
3. Remote Access to Embedded WEB

1. UT1xx/248 settings : Confirm IP address and embedded web

1-1. Confirm the IP address of KX-UT1xx/248.

1-1-1 : [Setting] or [Setup](Left soft key) → select [Information Display] → [Enter] → [Down] (joystick).

1-1-2 : Confirm the IP address displayed on LCD.

1-2. Embedded Web.

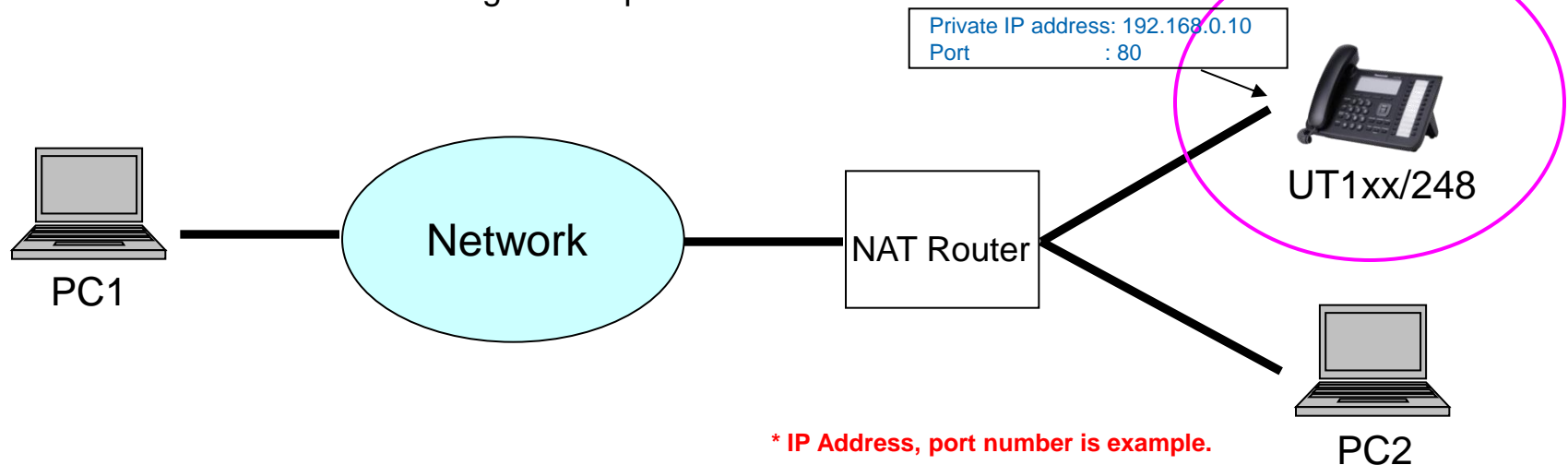
1-2-1 : [Setting] or [Setup] (Left soft key) → [#][5][3][4].

1-2-2 : Select [On] → [Enter].

NOTE!

The Web port of the unit will be closed automatically in the following conditions:

- The port close timer configured through the Web user interface expires (default 30 minutes).
- 3 consecutive unsuccessful login attempts occur.

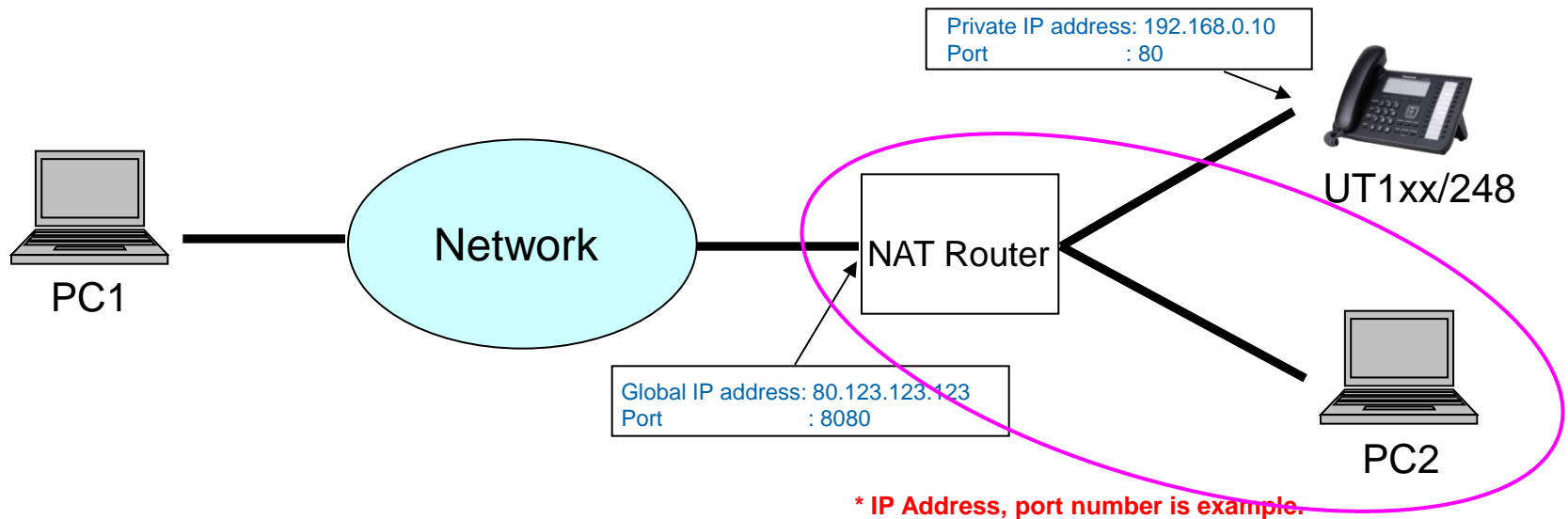


* IP Address, port number is example.

2. NAT Router settings for port forwarding

- 2-1. Access to the WEB user interface of NAT router by PC2.
- 2-2. Check the global IP address
- 2-3. Open "Port Forwarding (example)" page
- 2-4. Set the open WAN port number and select protocol (TCP,UDP)
- 2-5. Set the IP address (confirmed by 1-1) and port number (80) of UT1xx/248.

For details about the settings, see the manual of NAT router.



3. Remote Access to Embedded WEB from outside of NAT router

Operations of PC1.

- 1 : Open your Web browser.
- 2 : Enter NAT router URL (global IP address) and port number to Web browser (http://NAT router URL:port number) .

Then the authentication screen of UT1xx/248 is opened.

- 3 : Enter user name (admin) and password (adminpass) and click "OK".
- 4 : The Web user interface window is displayed.
Configure the settings for the unit as desired.

