

How to manage the configuration file downloading

(KX-UT670)

No. 22-014

Dec 22 , 2011

Ver.1.0

Panasonic Corporation

Abstract about this document

This document describe about how to manage the configuration file downloading.

Revision history

| Date | Version | Revision | Firmware version |
|--------------|----------|-----------------|------------------|
| Dec 22, 2011 | Ver. 1.0 | Initial Release | All versions |

Manage for Download timing of Configuration Files

UT670 can automatically download the configuration files when it starts up according to its setting.

Also depending on the settings, we can control the download timing.

It can also download periodically, or download by synchronizing with SIP NOTIFY signal.

Please refer to the following sections for detail.

- 1-1. Parameters for determining the timing of downloading
- 1-2. Configuration for Automatic Download
- 2-1. Download by Synchronizing with SIP NOTIFY signal
- 2-2. Configuration for Synchronizing with SIP NOTIFY signal
- 3. Explanation of Setting Parameter

1-1. Parameters for determining the timing of downloading

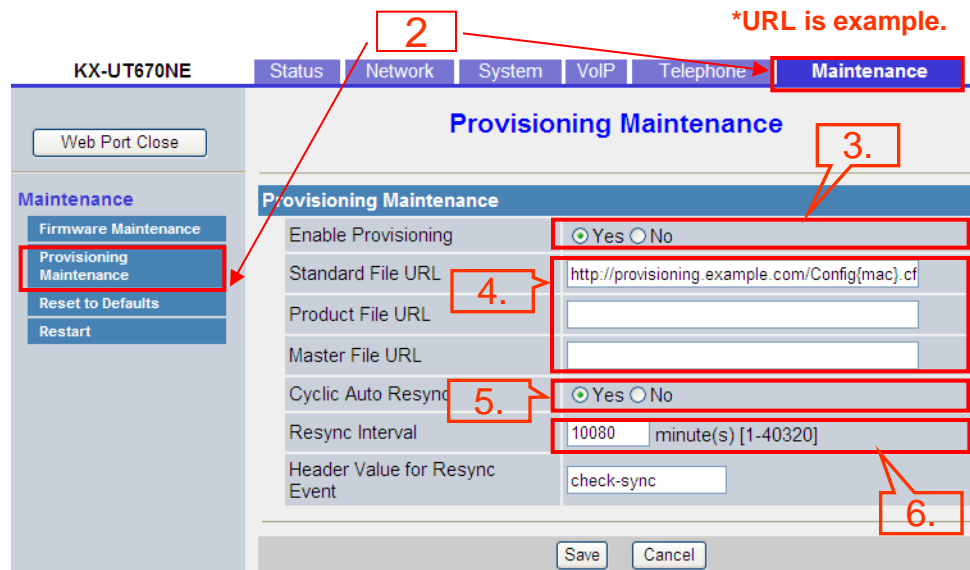
| Configuration Parameter (web user interface parameter) | Prohibit Download | Download Once at startup | Periodical Download in specified interval | Periodical Download at specified time |
|--|-------------------|-----------------------------|--|--|
| PROVISION_ENABLE (Enable provisioning) | N | Y | Y | Y |
| CFG_CYCLIC (Cyclic auto resync) | - | N | Y | Y |
| CFG_CYCLIC_INTVL (Resync Interval) | - | - | Interval in minutes "10080" is default | - |
| CFG_RESYNC_TIME (-) | - | - | - | Resync Time e.g. "02:00" |
| CFG_RTRY_INTVL (-) | - | - | Retry Count "30" is default. | - |
| Download configuration file in each settings | | | | |

(-)not effective

1-2. Configuration for Automatic Download

Setting method via WEB user interface

1. Enter the IP address into a PC's Web Browser. Login "Administrator".
2. Move to [Maintenance] - [Provisioning Maintenance] screen.
3. Check [Enable Provisioning] – "Yes".
4. Enter the path of Configuration file.
5. Check [Cyclic Auto Resync] – "Yes".
6. Enter the interval of download.



Setting method by Configuration file

1. Please set the configuration file as follows.

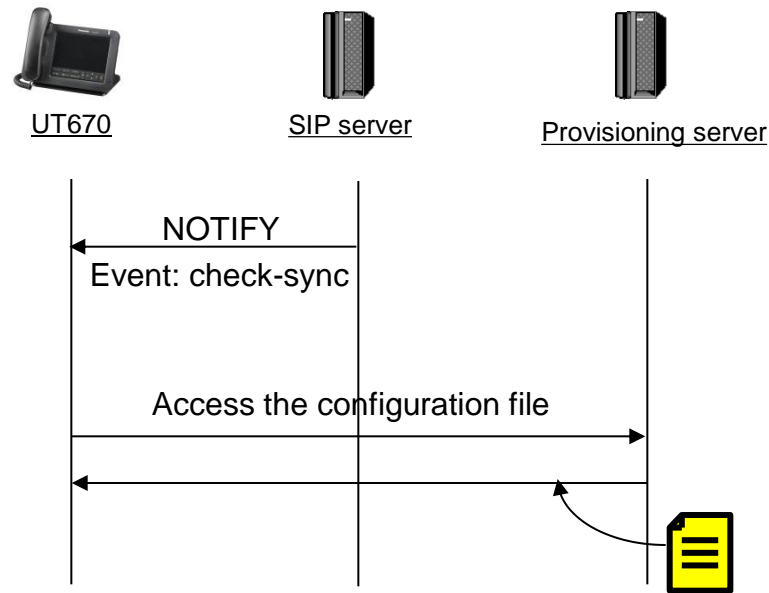
```
PROVISION_ENABLE="Y"  
CFG_STANDARD_FILE_PATH="http://provisioning.example.com/Config{mac}.cfg"  
CFG_CYCLIC="Y"  
CFG_CYCLIC_INTVL="10080"
```

*CFG_CYCLIC_INTVL="10080" is default value. Value range is "1 – 40320".

2. Apply to the terminal.

2-1. Download by Synchronizing with SIP NOTIFY signal

“Event” header value is example.



The following figure shows an example NOTIFY message from the server, directing the units to perform provisioning. The text "check-sync" is specified for "CFG_RESYNC_FROM_SIP".

```
NOTIFY sip:1234567890@sip.example.com SIP/2.0
Via: SIP/2.0/UDP xxx.xxx.xxx.xxx:5060;branch=abcdef-ghijkl
From: sip:prov@sip.example.com
To: sip:1234567890@sip.example.com
Date: Thu, 1 Jan 2009 01:01:01 GMT
Call-ID: 123456-1234567912345678
CSeq: 1 NOTIFY
Contact: sip:xxx.xxx.xxx.xxx:5060
Event: check-sync
Content-Length: 0
```

2-2. Configuration for Synchronizing with SIP NOTIFY signal

Setting method via WEB user interface

1. Enter the IP address into a PC's Web Browser. Login "Administrator".
2. Move to [Maintenance] - [Provisioning Maintenance] screen.
3. Specifies the value of the "Event" header (typically "check-sync" or "resync" is set) to "Header Value for Resync Event"

KX-UT670NE

Status Network System VolP Telephone **Maintenance**

Web Port Close

Provisioning Maintenance

Maintenance

- Firmware Maintenance
- Provisioning Maintenance**
- Reset to Defaults
- Restart

Provisioning Maintenance

| | |
|-------------------------------|---|
| Enable Provisioning | <input checked="" type="radio"/> Yes <input type="radio"/> No |
| Standard File URL | http://provisioning.example.com/Config{mac}.cf |
| Product File URL | |
| Master File URL | |
| Cyclic Auto Resync | <input checked="" type="radio"/> Yes <input type="radio"/> No |
| Resync Interval | 10080 minute(s) [1-40320] |
| Header Value for Resync Event | check-sync |

Save Cancel

*URL is example.

Setting method by Configuration file

1. Please set the configuration file as follows.

```
CFG_RESYNC_FROM_SIP="check-sync"
```

2. Apply to the terminal.

3. Explanation of parameter(1/2)

| Configuration File Parameter (WEB user interface Parameter) | Value Range (default) | Description |
|--|--------------------------|--|
| PROVISION_ENABLE (Enable provisioning) | Y/N (Y) | Specifies whether the unit is automatically configured by downloading the configuration files from the provisioning server of your phone system. |
| CFG_CYCLIC (Cyclic auto resync) | Y/N (N) | Specifies whether the unit periodically downloads configuration files from the provisioning server. |
| CFG_CYCLIC_INTVL (Resync Interval) | 1-40320 (10080) | Specifies the interval, in minutes, between periodic downloads configuration files from the provisioning server. |
| CFG_RTRY_INTVL (-) | 1-1440 (30) | Specifies the period of time, in minutes, that the unit will retry downloading configuration files after download/parse error occurs. |

3. Explanation of parameter(2/2)

| | | |
|--|--|---|
| <p>CFG_RESYNC_TIME (-)</p> | <p>00:00–23:59 (Empty string)</p> <p>Note</p> <ul style="list-style-type: none"> • If the value for this setting is any valid value other than an empty string, the unit downloads the configuration files at the fixed time, and the settings specified in "CFG_CYCLIC", "CFG_CYCLIC_INTVL", and "CFG_RTRY_INTVL" are disabled. • If the value for this setting is an empty string, downloading the configuration files at the fixed time are disabled. | <p>Specifies the time (hour:minute) that the unit checks for updates of configuration files.</p> |
| <p>CFG_RESYNC_FROM_SIP (Header Value for Resync Event)</p> | <p>Max. 15 characters</p> <p>Note</p> <ul style="list-style-type: none"> • If the value for this setting is any value other than an empty string (typically "check-sync" or "resync" is set), the unit will access the configuration files on the provisioning server when the SIP server sends an event to notify the unit. • If the value for this setting is an empty string, the unit will not access the configuration files on the provisioning server even if the unit receives a synchronization notification of an event. | <p>Specifies the value of the "Event" header sent from the SIP server to the unit so that the unit can access the configuration files on the provisioning server.</p> |

How to access Web user interface

1. Confirm the IP address of KX-UT670.

1-1 : [Menu] (Upper left of sheet key) →[Settings] → [About phone] → [Status]

1-2 : Confirm the IP address displayed on LCD.

2. Embedded Web.

2-1 : [Menu] (Upper left of sheet key) →[Settings] → [Network]
→[Embedded web] →select [On]

3. Access the Web user interface.

3-1 : Open your Web browser.

3-2 : Enter your KX-UT670 URL to Web browser
(<http://your KX-UT670 IP address>) .

3-3 : Enter user name (**admin**) and password (**adminpass**) and click “OK”.

3-4 : The Web user interface window is displayed.
Configure the settings for the unit as desired.