



Instant Scanning Software Summary

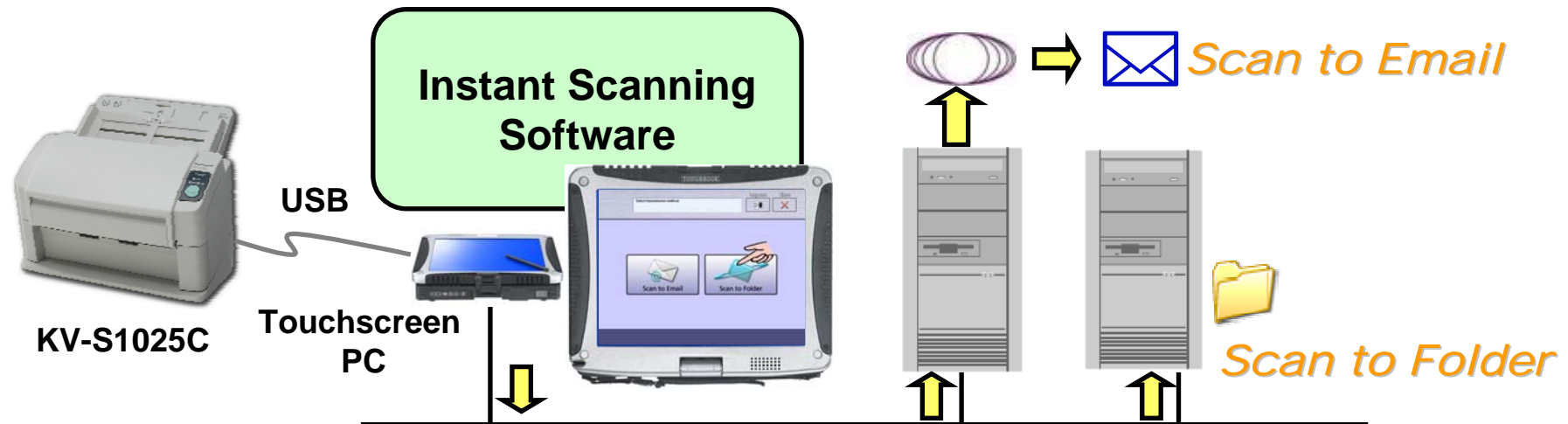
Overview

“Instant Scanning Software”

It's a new concept application software.

It provides network scanning.

It provides simple and secure operation.



Feature Highlights -1

- **Scan to Folder**

- To Save a scanned image to a shared folder, just select from the preset folder list



- **Scan to Email**

- To send a scanned image as an attachment to a mail server, just select from the preset address list



Feature Highlights -2

- **Easy and intuitive Operation**

- Simple screen design
- Touchscreen PC support



Example: Toughbook with Touchscreen
Screen size: 1024 x 768 dots

- **Secure Operation**

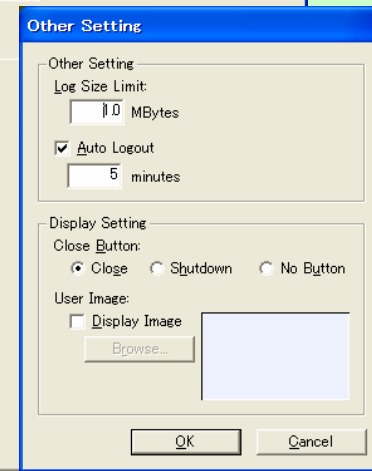
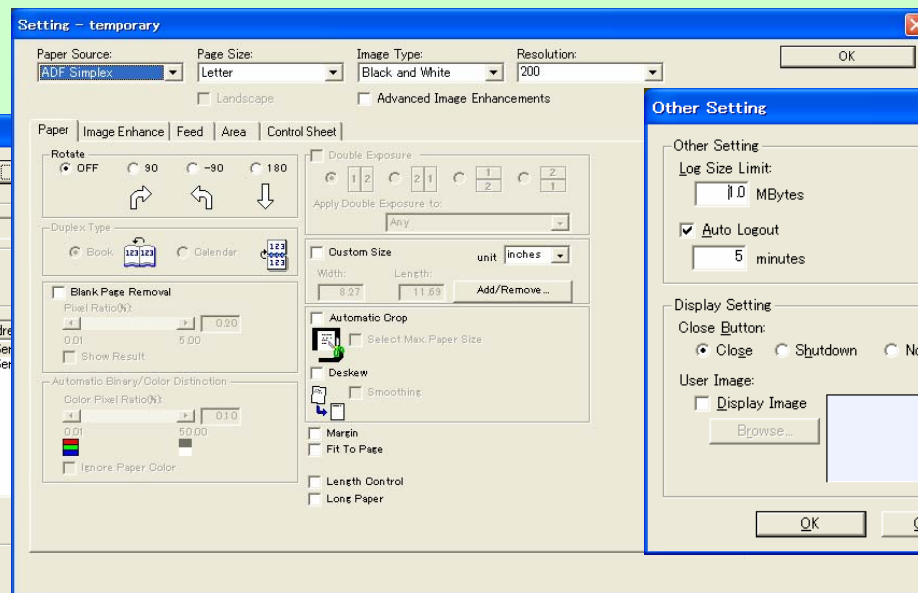
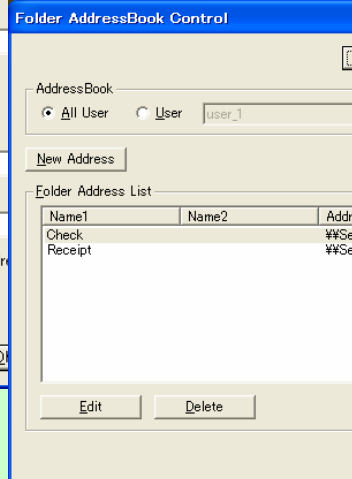
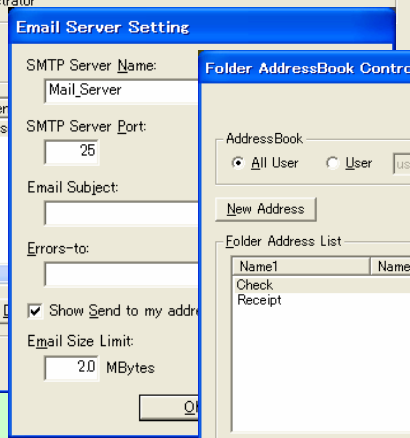
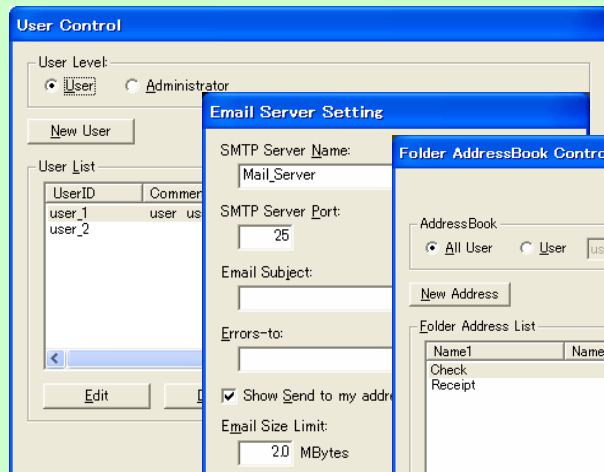
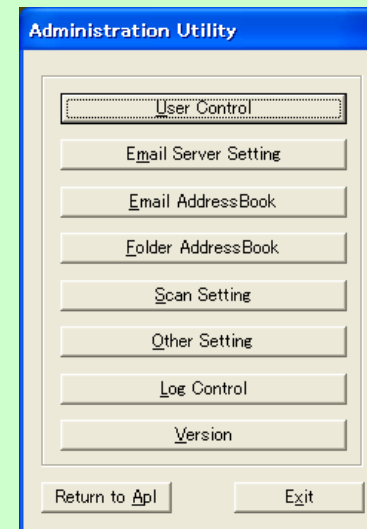
- Login system prevents unauthorized use
- To prevent wrong operation, just select from the preset list



Feature Highlights -3

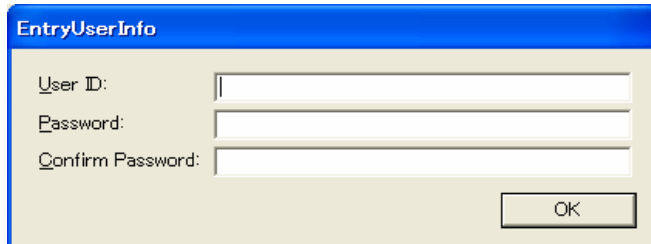
- **Administration Utility**

- Register each operator
- Manage all settings for each operator
- Only the administrator can use



Installing and Administrator Configuration

1. Please prepare User ID and Password before installing this software.
2. Execute the downloaded file. The installation wizard is displayed.
3. Read the License Agreement carefully.
4. When the EntryUserInfo window is displayed, please enter your User ID, and Password. This account has administrator privileges



- Input up to 20 characters consisting of 0–9, a–z, A–Z, "@", ".", and "_".
 - If you forget the Administrator User ID and Password, you must uninstall the software, and re-install it again.
- If you have installed Ver0.1.1.2 (*β* version), please note following to keep settings.
- ① Save the current Config folder (C:¥Program Files¥Panasonic¥Instant Scanning Software¥Config).
 - ② Uninstall Ver0.1.1.2.
 - ③ Install new version
 - ④ Restore saved Config folder.

5. Administrator Configuration

The administrator must configure the following settings. For details, refer to the Operating Instructions.

- *User accounts*
- *Email Server*
- *Email addresses as destination for scanned data (Scan to Email).*
- *Shared folders on the network as destination for scanned data (Scan to Folder).*
- *Scan settings such as resolution and contrast.*

If you login as the administrator, administration utility starts automatically.

Using Instant Scanning Software

Login



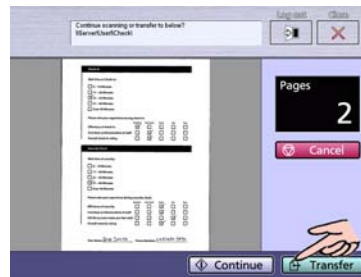
Select a transmission method



Select a scan setting



Scan Documents



Transfer to Preset folder or Address








or



Support Touchscreen PC

- Provides Easy and intuitive Operation.
- Prevents wrong operation.

Specifications and System Requirements

Specifications	
Number of Users	Up to 100 users can be registered.
Number of Email Addresses	Up to 1000 Email addresses can be stored.
Number of Folders	Up to 1000 folder locations can be set.
Folder Address Book	Up to 1,000 folder locations (Importing and Exporting are supported)
Scan Settings	Up to 50 presets can be set.
File Format	Multi-page PDF
Image Enhancement	Panasonic Image Enhancement Technology     
Log Management	User's actions such as logging in, logging out, scanning, etc. The logged data can be viewed, erased, or saved as a text file.

System Requirements	
Compatible Scanner	Panasonic KV-S1025C / KV-S1020C
OS	Windows® XP Professional (SP1 or later) or WindowsVista® bussiness(32bit)
CPU	Minimum: 1.0 GHz Intel® Pentium® III, Recommended: 2.0 GHz Intel Pentium 4
RAM	Windows XP: Minimum – 256 MB, Recommended – 512 MB WindowsVista: Minimum – 512 MB, Recommended – 1.0 GB
Screen	Minimum size 1024 x 768 dots. 65535 colors or higher. Touchscreen is recommended.
Interface with scanner	USB 2.0
Email Server	SMTP server (IPv6, SMTP AUTH and POP before SMTP are not supported)